



Bayview Yacht Club

Annual Thursday Night Race Series

~ SAILING INSTRUCTIONS ~

1.1 RULES

The races will be governed by rules as defined in the current "Racing Rules of Sailing" (RRS) or as modified by the Sailing Instructions (SI).

- 1.2 When there is conflict, the "Sailing Instructions" (SI) shall prevail over the notice of race (this changes RRS 63.7)

2.1 SIGNALS MADE ASHORE and AFLOAT by RACE COMMITTEE

Signals made ashore will be displayed at the race committee end of the starting line located on the second floor balcony of the "Commodore's Room". Signals made afloat will be from a Race Committee Boat.

2.2 <u>Shortened Course (Made Ashore)</u>	"S" flag (blue rectangle on white field) will be displayed before the Preparatory signal of any class for which it applies. (this changes RRS 32)	2 long sounds
<u>Shortened Course (Made Afloat)</u>	"S" flag (blue rectangle on white field) will be displayed applying to all classes in which lead boat has not yet advanced to that position on the race course.	Repetitive sounds
<u>Recall signal</u>	"X" (blue cross on white field) flag for individual recall "First Substitute" flag for general recall	1 sound 2 sounds
<u>Postponement signal</u>	"AP" pennant (3 red, 2 white vertical bars on triangular pennant) races not started are postponed. The warning signal will be made 1 minute after removal	2 sounds
<u>Abandonment signal</u>	"N" flag (blue and white checkerboard pattern) all races are abandoned, return to the starting area. The warning signal will be made 1 minute after removal "N over A" (vertical blue and white swallowtail) flags, all races abandoned, no more racing today	3 sounds 3 sounds

3.1 FORMAT OF RACING

The BYC THURSDAY SERIES is comprised of ten (10) races.

- 3.2 Races are scheduled as shown: May 24th, June 7th, June 21st, and June 28th, July 5th, August 2nd, August 16th, and Aug 30th, September 13th, and September 27th.

3.3	<u>CLASS</u>	<u>PARTICIPANTS</u>	<u>STANDARD</u>	<u>SHORTENED</u>	<u>Class Flag</u>
	START 1	Ultimate 20	Course 1	Course 2	1
	START 2	PHRF C (PHRF JAM 153 and Higher)	Course 2	Course 3	2
	START 3	PHRF B (PHRF JAM 90 through 150)	Course 1	Course 2	3
	START 4	PHRF A (PHRF JAM 87 and Lower)	Course 1	Course 2	4

3.4 All Classes racing under PHRF handicapping are to use Jib and Main only (JAM).

DRYA JAM RATINGS OR EQUIVALENT WILL BE USED FOR THE SEASON

3.5 **ULTIMATE 20** skippers **MUST** report their bow number and their **name** to the race committee BEFORE the race in order to be eligible for a flag.

4.1 RACING AREA

Addendum A, 'Thursday Series Racing Map', shows the location and layout of course buoys. The race area is on the Detroit River in the area upstream and downstream from BYC.

4.2 Classes are assigned to sail the race courses as follows:

Marks to Starboard is signaled by a GREEN cylinder shape displayed from the downstream end of the committee station.

Marks to Starboard:

** Referenced Latitudes and Longitudes are approximations

COURSE #1 Distance = 3.65 NM

LAT	LONG	TO	Buoy	MARK TO	BEARING (DEG)	RANGE (NM)
N42 21.377	W82 55.800	BYC-A	YELLOW	STBD	088	0.95
N42 21.147	W82 56.566	G113	GREEN	STBD	256	0.61
N42 21.091	W82 57.084	BYC	RED	STBD	269	0.39
N42 21.254	W82 58.215	BYC-B	YELLOW	STBD	289	0.85
N42 21 225	W82 57.072	FINISH	ORANGE		100	0.85

COURSE #2 Distance = 2.54NM

LAT	LONG	TO	Buoy	MARK TO	BEARING (DEG)	RANGE (NM)
N42 21.377	W82 55.800	BYC-A	YELLOW	STBD	088	0.95
N42 21.147	W82 56.566	G113	GREEN	STBD	256	0.61
N42 21.091	W82 57.084	BYC	RED	STBD	269	0.39
N42 21.200	W82 57.460	G1A	GREEN	STBD	299	0.30
N42 21.225	W82 57.072	FINISH	ORANGE		093	0.29

COURSE #3 Distance = 1.36NM

LAT	LONG	TO	Buoy	MARK TO	BEARING (DEG)	RANGE (NM)
N42 21.147	W82 56.566	G113	GREEN	STBD	109	0.38
N42 21.091	W82 57.084	BYC	RED	STBD	269	0.39
N42 21.200	W82 57.460	G1A	GREEN	STBD	299	0.30
N42 21.225	W82 57.072	FINISH	ORANGE		093	0.29

Marks to Port is signaled by a RED cylinder shape displayed from the downstream end of the committee station.

Marks to Port:

**** Referenced Latitudes and Longitudes are approximations**

COURSE #1 Distance = 3.65 NM

LAT	LONG	TO	Buoy	MARK TO	BEARING (DEG)	RANGE (NM)
N42 21.254	W82 58.215	BYC-B	YELLOW	PORT	280	0.85
N42 21.091	W82 57.084	BYC	RED	PORT	109	0.85
N42 21.147	W82 56.566	G113	GREEN	PORT	089	0.39
N42 21.377	W82 55.800	BYC-A	YELLOW	PORT	076	0.61
N42 21 225	W82 57.072	FINISH	ORANGE		268	0.95

COURSE #2 Distance = 2.54NM

LAT	LONG	TO	Buoy	MARK TO	BEARING (DEG)	RANGE (NM)
N42 21.200	W82 57.460	G1A	GREEN	PORT	273	0.29
N42 21.091	W82 57.084	BYC	RED	PORT	119	0.30
N42 21.147	W82 56.566	G113	GREEN	PORT	089	0.39
N42 21.377	W82 55.800	BYC-A	YELLOW	PORT	076	0.61
N42 21.225	W82 57.072	FINISH	ORANGE		268	0.95

COURSE #3 Distance = 1.36NM

LAT	LONG	TO	Buoy	MARK TO	BEARING (DEG)	RANGE (NM)
N42 21.200	W82 57.460	G1A	GREEN	PORT	273	0.29
N42 21.091	W82 57.084	BYC	RED	PORT	119	0.30
N42 21.147	W82 56.566	G113	GREEN	PORT	089	0.39
N42 21.225	W82 57.072	FINISH	ORANGE		289	0.38

Course Tables

- 4.3** Courses may be shortened after the start by an “S” Flag displayed on a RC boat at any mark. Round that mark then continue directly to the Finish Line, crossing it in direction from the last mark. This changes rule 32.2
- 4.4** Legs of the courses will not be changed from the Course Tables. This changes rule 33
- 4.5** Marks of the course include BYC inflatable marks as well as government navigational buoys.

5.1 THE START

Races will be started by using RRS rule 26 with the first warning signal at or about **1900 hours**.

- 5.2** Numeral boards corresponding to class flags assigned in Para. 3.3 may be displayed ashore near the starting line mark identifying the upcoming start. The boards are not to be considered signals.
- 5.3** Races will be started by using rule 26 with the warning signal made 5 minutes before the starting signal.
- 5.4** Times shall be taken from the visual signals; the absence of error of a sound signal shall be disregarded.
- 5.5** The starting line will be between the orange flag or shape displayed on the balcony of the BYC “Commodores Room” and a floating orange inflatable or rigid buoy floating in the river opposite the mark ashore.

6 THE FINISH

The finish line will be between the orange flag or shape displayed on the balcony of the BYC “Commodores Room” and a floating orange inflatable or rigid buoy floating in the river opposite the mark ashore.

7.1 TIME LIMITS

The time limit for all classes to complete their course, as required by rule 28, is 2 hours.

- 7.2 Boats failing to finish within two (2) hours after their class start, as required by rule 28, shall be scored 'Did Not Finish' (DNF). (This changes rules 35, A4 and A5)

8.1 PROTESTS AND REQUESTS FOR REDRESS

Protest forms are available on line at <http://www.ussailing.org/racemgt/documents/ussapf.pdf>

- 8.2 Protests and requests for redress or reopening shall be delivered to the Race Committee staff within the appropriate time limit.

- 8.3 For each class the protest time limit is 1 hour after the last boat has finished or the time limit has expired (reference RRS 61.3).

- 8.4 The time and place of protest hearings, if any, will be notified by the Race Committee.

- 8.5 **DSQs cannot be thrown out for series scoring.**

- 8.6 At the Race Committee's discretion, arbitration may be available with a twenty (20%) percent penalty.

9.1 SCORING

- 9.2 The series standings will be determined by low point scoring as described in RRS Appendix A2

- 9.3 The cumulative score of the best 8 out of 10 races will determine the overall finishing position for the Series Championship.

- 9.4 A missed series race will be used as one of the 'throw outs' race for totaling the final series score

- 9.5 Ties for awards will be resolved using the methods set forth in RRS A8.

- 9.6 For each class in a series; first, second, and third place flags will be awarded for classes having 5 or more boats registered, first and second place flags for classes having 4 boats registered, and a first place flag for classes having less than 4 boats registered.

- 9.7 An Overall Award will be determined at the sole discretion of the Race Committee based upon criteria including but not limited to: Participation within a Class, Total number of boats registered for a class, Individual yacht performance within their class, and level of competitiveness within a class.

10 RETIRING FROM THE RACE

A boat that retires from a race shall notify the race committee as soon as possible. The race committee may be available on channel 72 and can be contacted on this channel when able to do so, pending performance of other tasks.

11 RADIO COMMUNICATION

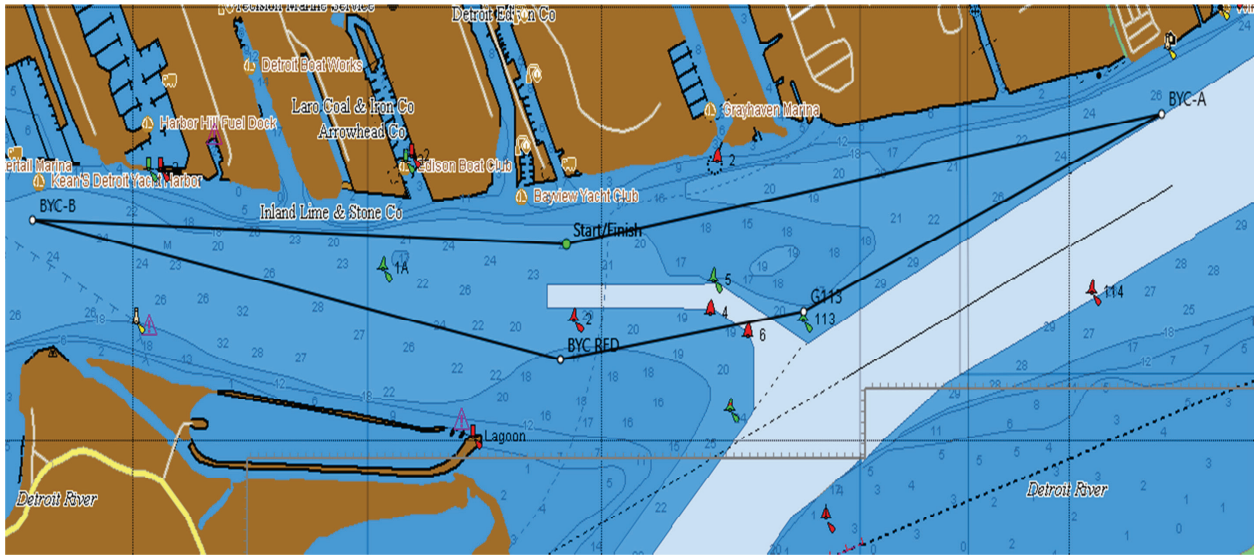
The Race Committee may communicate with the Mark Set and Patrol boat on Channel 72. The start sequence countdown may be broadcast on this channel. 2016 BYC Thursday Series SI 5.4 still applies in all cases.

12.1 INTERFERENCE WITH SHIPPING, VIOLATION OF INLAND RULES OF THE ROAD **Competitors shall not interfere with commercial shipping transiting the racing area at any time.**

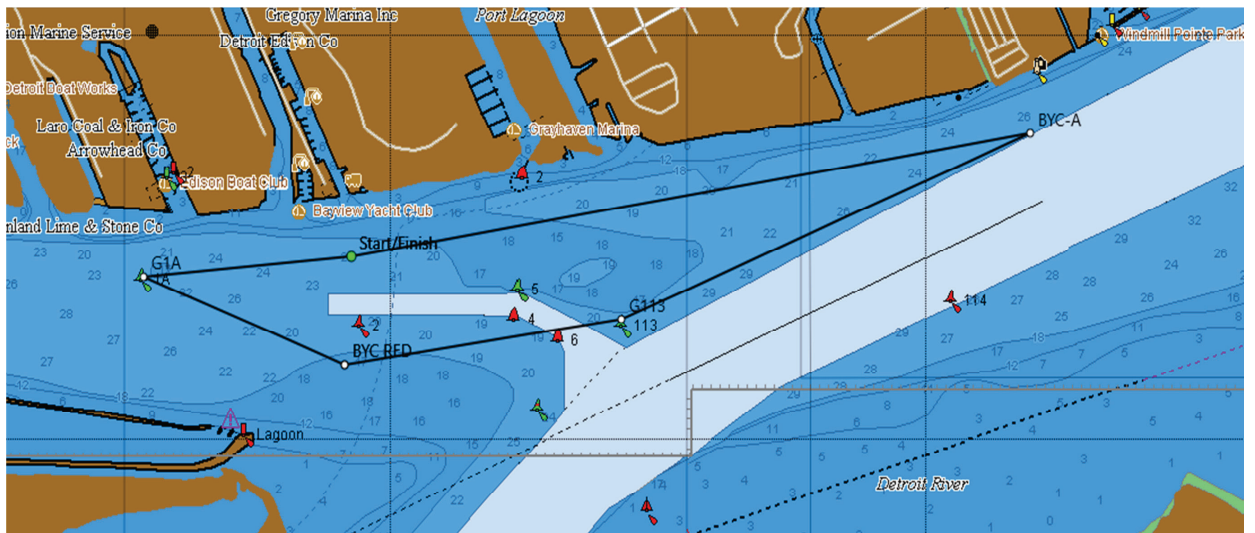
- 12.2 Any boat not complying with 12.1 may be subject to protest by the race committee and may be reported to the Coast Guard.

- 12.3 Infraction of 12.1 is not subject to protest by another boat (this changes RRS 60.1).

COURSE #1



COURSE #2



COURSE #3

